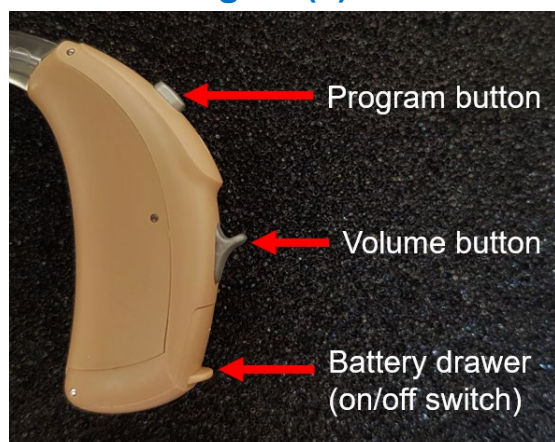


Patient information

Hearing Aid Instructions: Phonak Auto M / Auto SP

Your hearing aid(s)



Your hearing aid(s) have been set up:

- With a manual volume control
- With programs for different listening environments
- As fully automatic. The hearing aid automatically adjusts the sound it provides in response to the environment.

Identifying the left and right hearing aid

Positioned at the battery drawer hinge is a red or blue dot.



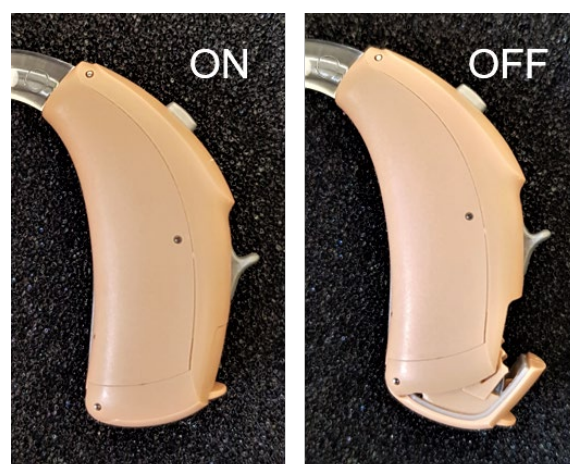
If you find it difficult to visualise the colour markers, please tell the Audiologist as they can suggest alternative identification markers.

Turning the hearing aid on and off

Close the battery drawer to turn the hearing aid on.

Open the battery drawer to turn the hearing aid off.

Remember to open the battery drawer when you are not wearing the hearing aid.



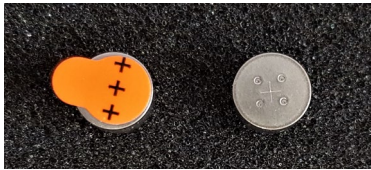
Changing the hearing aid battery

Each hearing aid requires a size 13 battery.

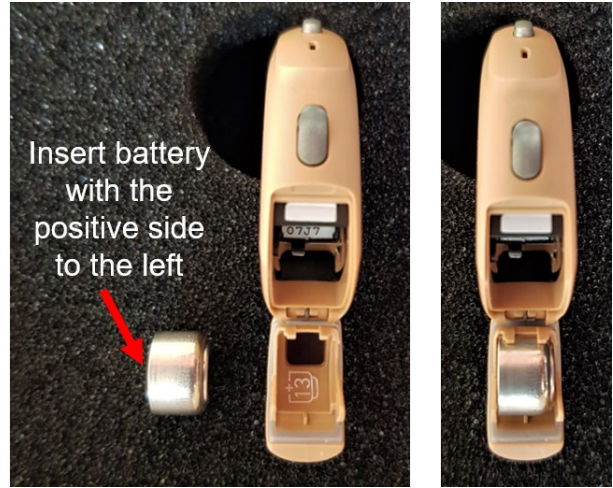
Each battery will last approximately 10 to 12 days. The hearing aid will give warning double beep when the battery needs changing.

Remove the orange sticker from the positive side of a new battery.

The positive side is shiny and engraved with four dimples and a plus sign.



Holding the hearing aid upright, insert the battery into the drawer with the positive side to the left.



Hearing Aid Programs

Your hearing aid(s) has been set up with different programs: YES / NO

Your hearing aid(s) will switch on in program 1.

Pressing the program button will switch the hearing aid to the next program.

Your hearing aid(s) has the following programs:

- Program 1 'Tune'.
- Program 2 '1 beep'
- Program 3 '2 beeps'
- Program 4 '3 beeps'

Your right and left hearing aid program buttons are:

- Wirelessly linked: changing the program on one aid will automatically be copied to the other aid.
- Separate: the button will need to be pressed on both hearing aids to change the program in both.



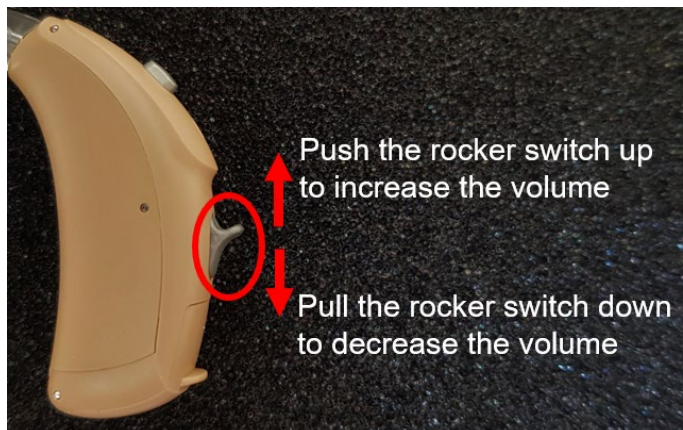
Volume Control

Your hearing aid(s) have been set up with a manual volume control: YES / NO

Use the rocker switch to adjust the volume.

Your hearing aid(s) have a volume range ofsteps.

Your hearing aid(s) will always switch on at the middle volume level.



The volume controls on your right and left hearing aids are:

- Wirelessly linked: changing the volume on one aid will automatically be copied to the other aid.
- Separate: the volume control switch will need to be pressed on both hearing aids to change the volume in both.

Audiology Department Contact Details

Telephone number: 0300 131 5679

Email: esht.audiology@nhs.net

Important information

This patient information is for guidance purposes only and is not provided to replace professional clinical advice from a qualified practitioner.

Your comments

We are always interested to hear your views about our leaflets. If you have any comments, please contact the Patient Experience Team – Tel: 0300 131 4731 (direct dial) or by email at: esh-tr.patientexperience@nhs.net

Hand hygiene

The trust is committed to maintaining a clean, safe environment. Hand hygiene is very important in controlling infection. Alcohol gel is widely available at the patient bedside for staff use and at the entrance of each clinical area for visitors to clean their hands before and after entering.

Other formats

If you require any of the Trust leaflets in alternative formats, such as large print or alternative languages, please contact the Equality and Human Rights Department.

Tel: 0300 131 4434 Email: esh-tr.AccessibleInformation@nhs.net

After reading this information are there any questions you would like to ask? Please list below and ask your nurse or doctor.

Reference

The following clinicians have been consulted and agreed this patient information:

Ian Woodward (Service Manager)

The Clinical Specialty/Unit that have agreed this patient information leaflet:

Audiology Department

Next review date: November 2025

Responsible clinician/author: Ian Woodward (Service Manager)

© East Sussex Healthcare NHS Trust – www.esht.nhs.uk