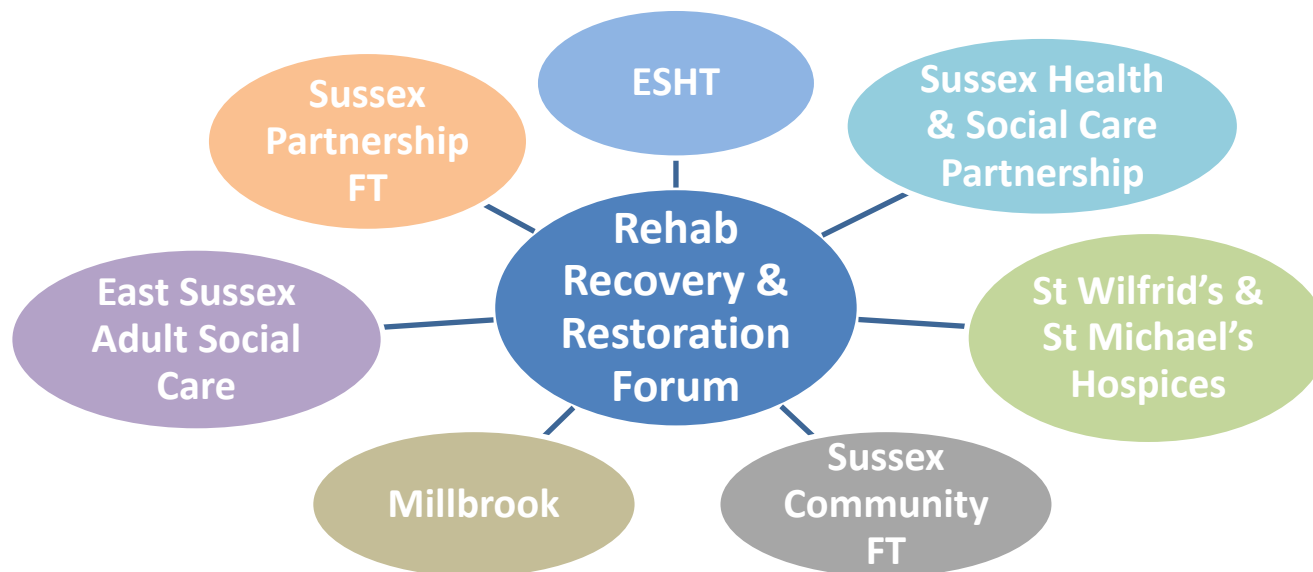


# REALISING COMMUNITY INVESTMENT & ACHIEVING SUSTAINABLE CHANGE (Phase 3) – NEXT STEPS



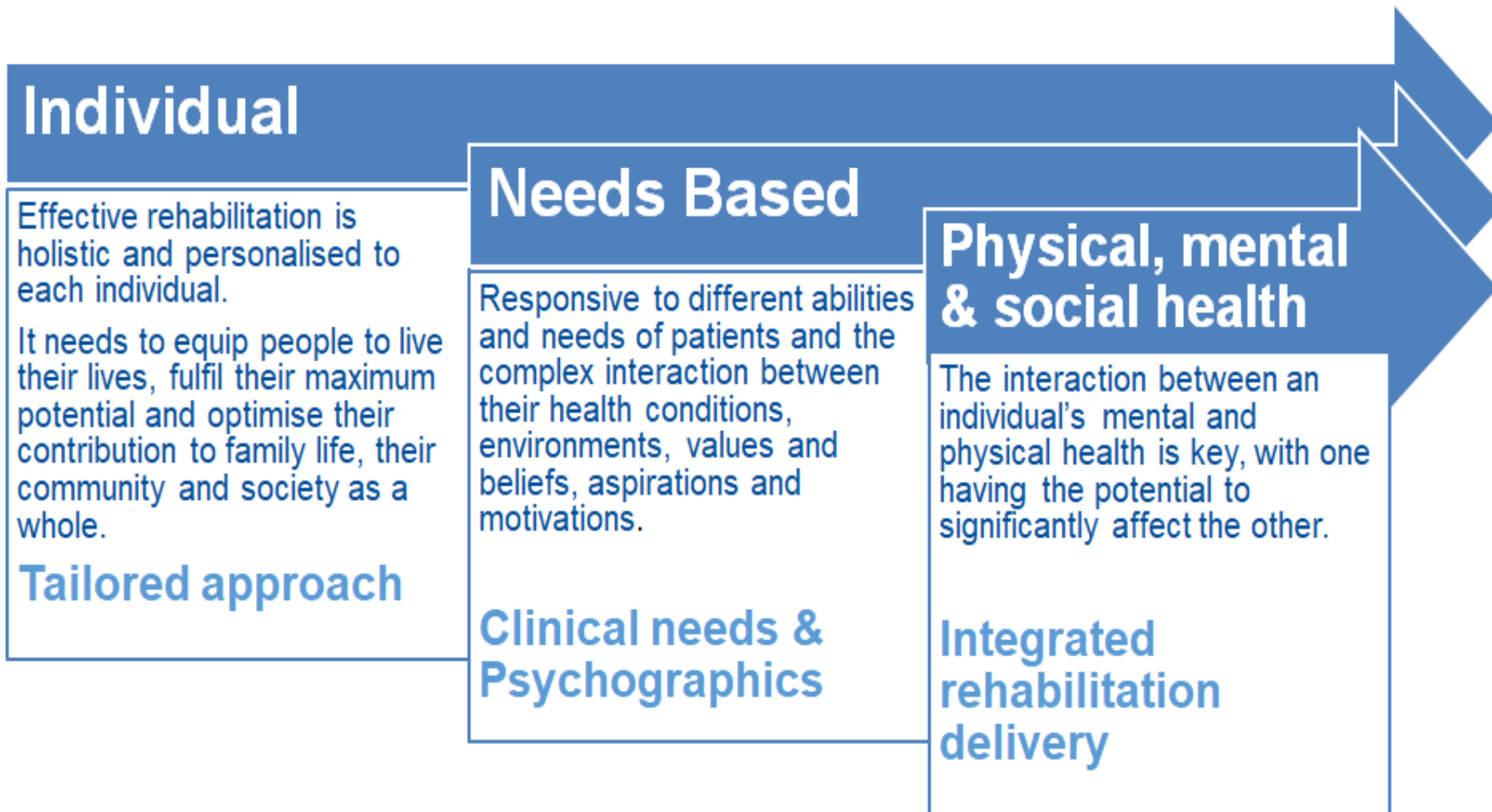
## What do we need to achieve?



### Common principles

- Tailored approach to individuals
- Needs based
- Integrated rehabilitation delivery

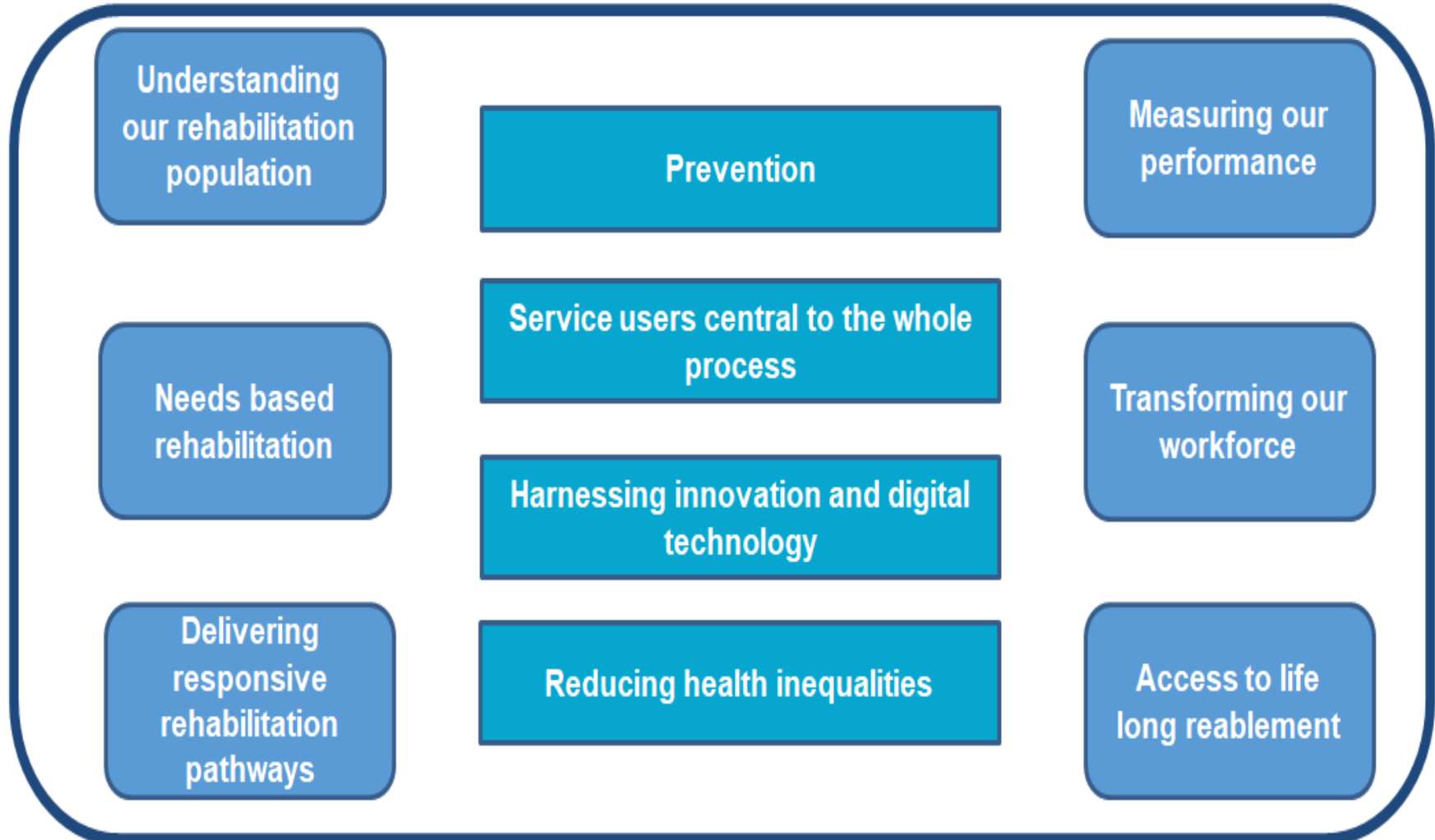
## Redefining Rehabilitation Principles



## Local Context – Target Operating Model

| Living independently at home for longer   | Prevent unnecessary hospital attendances and admissions   | Reduce length of time in hospital by promoting timely discharge                                 | System planning and design to optimise use of resources   |
|---|---|---|---|
| <ul style="list-style-type: none"> <li>• Postural Management pathway</li> <li>• Community multi-agency vMDT</li> <li>• Embedding Psychology &amp; Mental Health into rehab</li> <li>• Sussex Post Covid Assessment Service</li> <li>• ESHT Community Post Covid-19 Pathway</li> <li>• Integrated disability management clinics</li> </ul> | <ul style="list-style-type: none"> <li>• Self referral portal &amp; rehab advice</li> <li>• Pro-active review</li> <li>• Rapid access rehab beds</li> <li>• Ambulatory rehab model</li> <li>• Rehab into care home</li> </ul> | <ul style="list-style-type: none"> <li>• Implementation of Discharge to Assess (D2A)</li> </ul> | <ul style="list-style-type: none"> <li>• Rehab Decision Tool</li> <li>• Rehabilitation website page</li> <li>• Nerve-centre for community rehab</li> <li>• Rehab audits</li> <li>• Rehab Data Suite</li> <li>• Stratification &amp; segmentation Tools</li> </ul> |

## System Context - Rehabilitation Model for Sussex



## Projects identified so far – what else?

| Understanding our Rehab population  | Measuring our Performance  | Responsive Rehab  | Needs based rehab  | Transforming our workforce  | Lifelong Re-ablement  |
|---|--|---|--|---|---|
| <ul style="list-style-type: none"> <li>✓ Rehab Data Suite</li> <li>✓ Rehab audits</li> <li>✓ Embedding stratification/segmentation</li> </ul> | <ul style="list-style-type: none"> <li>✓ Patient Experience Framework</li> <li>✓ Rehab Data Suite</li> </ul> | <ul style="list-style-type: none"> <li>✓ Discharge to Assess (D2A)</li> <li>✓ Rehab Decision Tool</li> <li>✓ Rapid access rehab beds</li> <li>✓ Patient led access and review to rehab</li> </ul> | <ul style="list-style-type: none"> <li>✓ Sussex PCAS</li> <li>✓ Community Post Covid-19 Pathway</li> <li>✓ Rehab website page</li> <li>• Embedding psychology into rehab</li> <li>• Rehab into care homes</li> <li>• Ambulatory rehab model</li> </ul> | <ul style="list-style-type: none"> <li>✓ Engaging community assets</li> <li>✓ Right clinician, right patient</li> </ul> | <ul style="list-style-type: none"> <li>✓ Postural management pathway</li> <li>✓ Integrated approaches to disability management</li> </ul> |



# Rehabilitation Transformation Programme

## Our vision – Shifting how we respond in Sussex based on rehab stratification

