



KNOWLEDGE & LIBRARY SERVICES BULLETIN

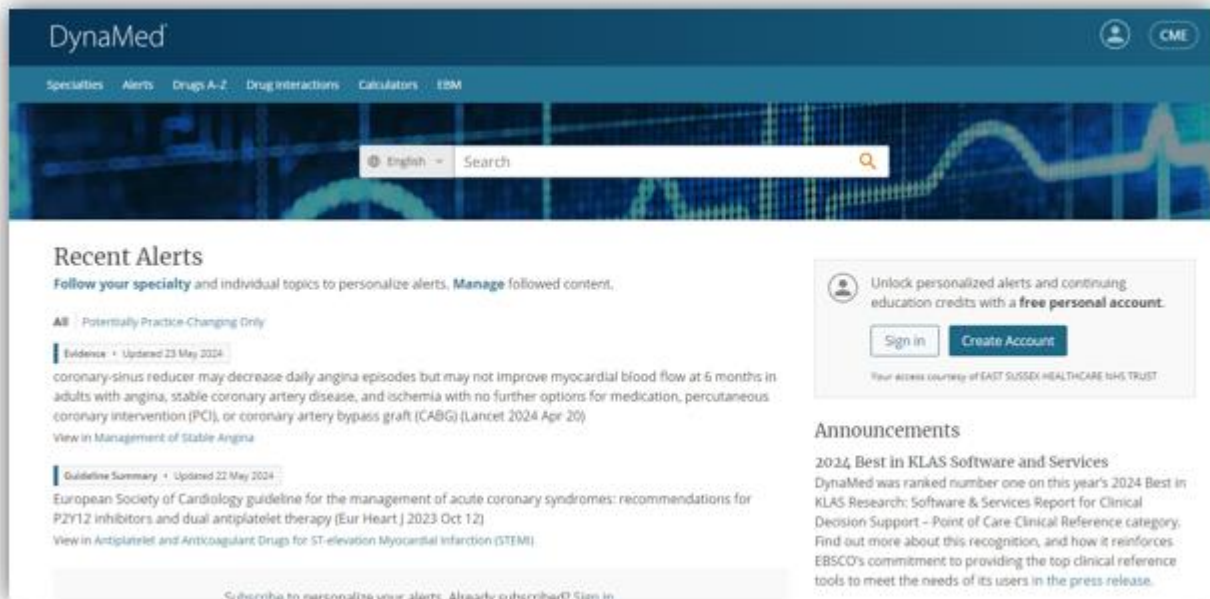
Issue 12 // June-July 2024

Clinical Decision Support Tool

DynaMed®

FREE TRIAL – Try DynaMed

DynaMed provides clinicians with real-time practice-changing updates, so the best available evidence is always at your fingertips. DynaMed combines the most current clinical evidence with guidance from leading experts and a user-friendly, personalised experience. There are over 45 specialties, plus calculators and drug interactions checker tools.



DynaMed OpenAthens link - [click here](#)

You can download DynaMed as a mobile app, create an account and link to your OpenAthens account (instructions at [find the instructions here](#)).

Join the DynaMed Grand Rounds on the following dates:

- **Tuesday 9th July** at Conquest Hospital Education Centre – 13:00-14:00
- **Monday 15th July** at Eastbourne DG Hospital Education Centre – 13:00-14:00

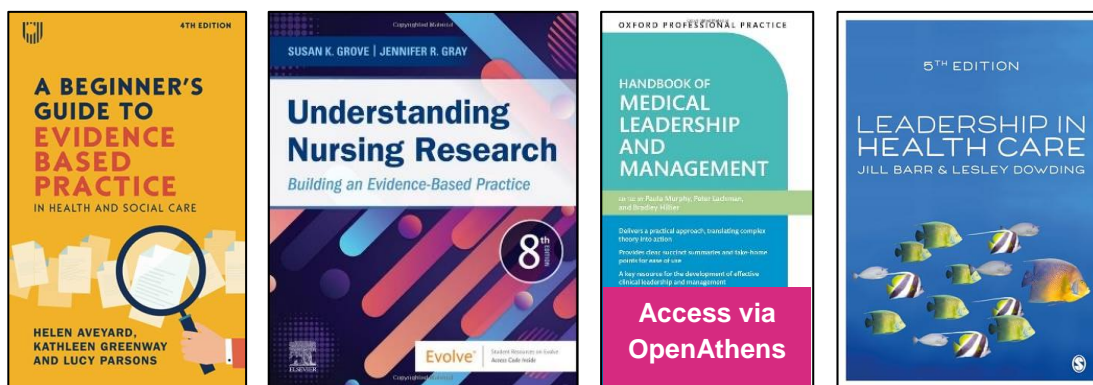
Please contact the Library Team at esht.libraryservices@nhs.net for more information.

You can now browse a large collection of e-books via [ProQuest Ebook Central](#) with an [NHS OpenAthens](#) login account. This platform allows 5 minute previews of each book, and the option to download some chapters.

New guidance

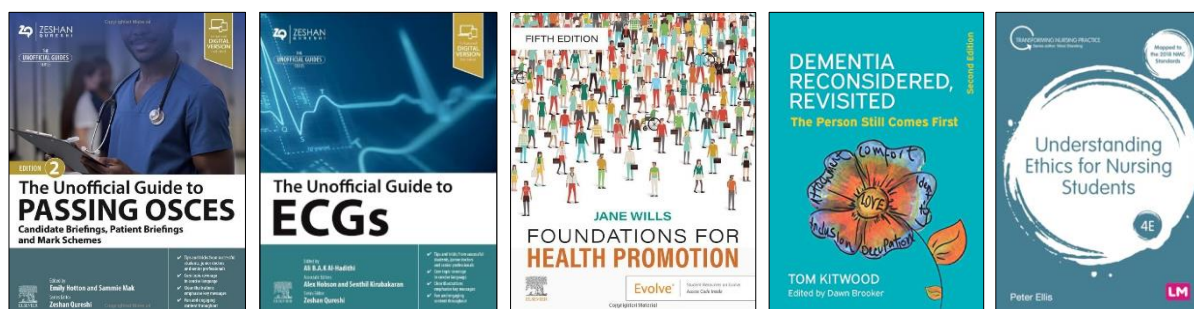
The Care Quality Commission (CQC) and NHS England recently published some new guidance ([found here](#)) on how they will be assessing the well-led key question. In it, they describe the importance of lifelong learning, innovation, and evidence-based practice informed by up-to-date and relevant resources.

The guidance includes links to best practice and resources for knowledge and evidence, and the Knowledge and Library Services can support you with further resources. Below are just a few of our books on evidence-based practice and leadership:



You can also access [BMJ Best Practice](#) and [UpToDate](#) via the Extranet or online anywhere with an OpenAthens account ([register here](#)) to find the latest clinical information.

New books



Visit our libraries to view our selection of new books. Click on the images above to reserve via the [library catalogue \(OPAC\)](#).

Research section

The Research Department have provided details of a clinical research study being supported by the Trust:

Minder is an award-winning study that aims to improve the lives and wellbeing of people with dementia. The aim of this sub study is to gain the perceptions and thoughts of the use of medical devices for people living with dementia.

The Research Department would be grateful if you could spare 5 (ish!) minutes to complete the survey.

Please share this with your contacts within the Trust as everyone can participate and this study can be forwarded to your friends and family too.

Please click [HERE](#) or scan the QR code below (if you have a smartphone).



Access High Quality Evidence - Join the Library!



Library membership is open to all Trust staff, including students on placement.

By joining the library you can get access to a wide range of physical and online resources, as well as training or assistance with literature searches, and 24/7 access to a comfortable and quiet place to study and relax.

To become a member, come see us in the libraries or complete our [online form](#).

Contact us

Email the Library Team: esht.libraryservices@nhs.net

The Education Centre, Conquest Hospital // Tel: 0300 131 5221 Ext: 770493

The Education Centre, Eastbourne District General Hospital // Tel: 0300 131 4500 Ext: 770593

w: <https://www.esht.nhs.uk/service/library-services/library-resources/>

 [@ESussex_NHSLibs](https://twitter.com/ESussex_NHSLibs)