



INTEGRATED EDUCATION

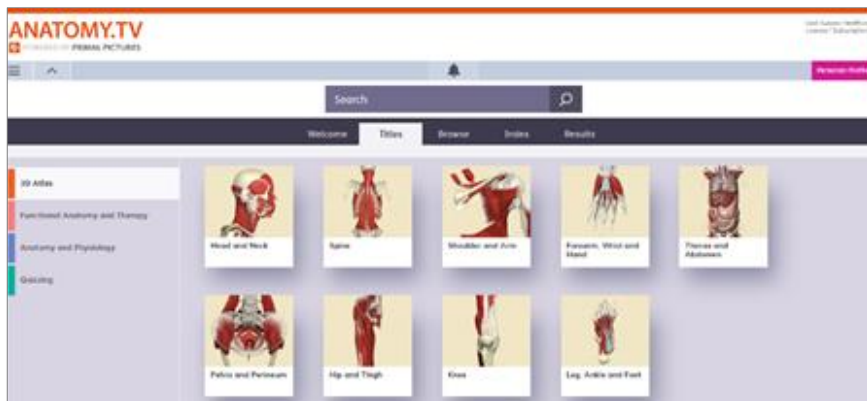
KNOWLEDGE AND LIBRARY SERVICES BULLETIN

Issue 9 // October-November 2023

Resource of the Month

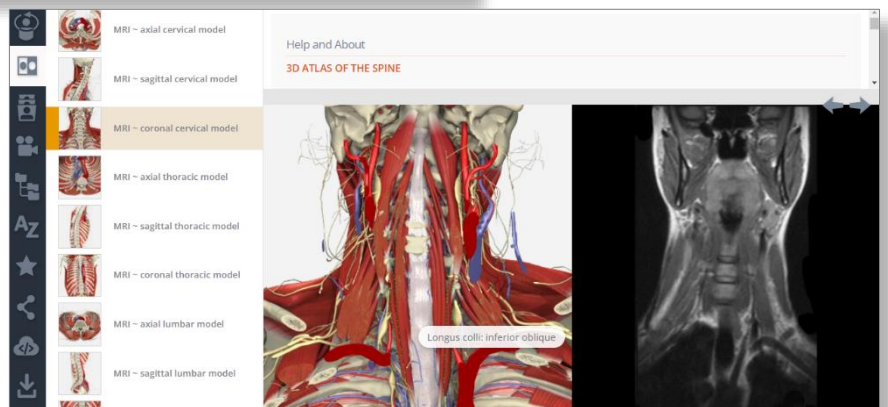
ANATOMY.TV

There is so much to discover on [Anatomy TV](#), from the 3D Atlas where you can rotate and build up images layer by layer, to dissection slides, MRI scans, animations and videos.



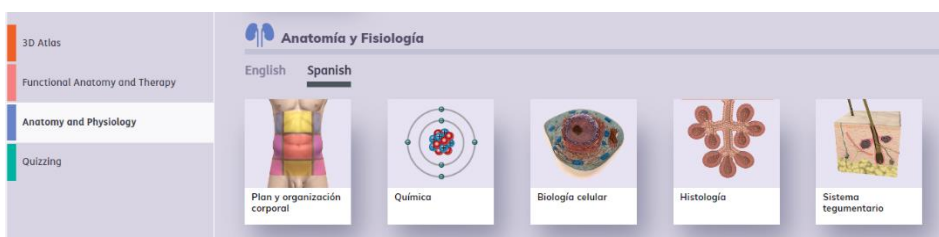
Watch the [video tutorial](#) to learn more

Click on the following link to view the [help guides](#)



You will also find interactive learning options – test your knowledge with quizzes and case studies. Plus all the images and videos are easy to download so you can use them in your presentations and teaching.

Login via your **NHS OpenAthens** account. If you don't have an account, register [here](#)



PLUS
The Anatomy and Physiology module is now available in Spanish language option!

BIM2023

DIG DEEPER, LOOK CLOSER, THINK BIGGER

Black History Month October 2023

The theme for Black History Month 2023 is 'Saluting our Sisters', celebrating the exceptional achievements of black women. In this issue, we highlight the contribution of Kofoworola Abeni Pratt to the NHS.

Come to the Library to explore our books supporting Black History Month, or click the images on the right to reserve via the [Library OPAC](#).

The Trust staff networks are working on various activities to celebrate BHM throughout October. Confirmed events include:

NHS Sussex Black History Month Bus Tour

Take the Thomas Highflyer Heritage Bus (named after a former slave who was born in East Africa and who later lived and died in Brighton) to visit Brighton & Sussex cultural landmarks.

Wednesday 11th October, 10:30 - 12:30 at Corn Exchange, Church Street, Brighton, BN1 1UE
Free event: <https://www.eventbrite.co.uk/e/brighton-and-hove-black-history-month-bus-tour-tickets-718540884127>

Maternal Health for Ethnic Minority Groups

With continuing research being published on ethnic minority individual's experiences of maternal healthcare, our multicultural network has collaborated with our maternity team to bring an insight into how we can support clinicians and nonclinical workforce to support under-represented patients.

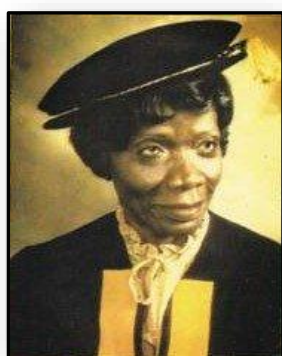
Thursday 19th October, 12:00 – 13:00 – MS Teams event

Book here: www.eventbrite.com/e/maternal-health-for-ethnic-minority-groups-tickets-719159604737

Visit the [extranet](#) for further details of all Black History Month 2023 events and activities.



Kofoworola Abeni Pratt



(Guy's and St Thomas NHS Foundation Trust, 2020)

Born in Lagos, Nigeria, in 1915, **Kofoworola Abeni Pratt** was a pioneer in the history of Black women in healthcare, particularly in the NHS. She trained as a nurse in Nigeria before coming to the UK to further her education at the Florence Nightingale School of Nursing. Pratt's arrival in the UK in 1946 marked a significant moment in the history of the NHS. She became one of the first Black nurses to be recruited by the NHS when it was founded in 1948. Pratt worked as a staff nurse at Evelina London Children's Hospital in 1952, then a charge nurse at St Thomas' Hospital the following year. Her dedication and competence as a healthcare professional helped break down barriers and stereotypes related to race and nursing.

Throughout her career, Pratt advocated for greater diversity and equal opportunities in nursing. She was an early advocate for the inclusion of more Black and minority ethnic nurses in the NHS, recognising the importance of a diverse workforce in providing effective healthcare. Her work is a testament to the resilience and determination of individuals who strive to make a difference in the field of healthcare.

References

Akinsanya, J., 1987. An African 'Florence Nightingale: a biography of Chief (Dr) Mrs Kofoworola Abeni Pratt. Ibadan: Vantage Publishers.
Guy's and St Thomas NHS Foundation Trust, 2020. Celebrating the NHS's first black nurse, who worked at Evelina London. Available at: <https://www.evelinalondon.nhs.uk/about-us/news-events/2020-news/20201020-first-black-nhs-nurse-at-evelina-london.aspx> [Accessed 29 September 2023].

[UpToDate](#) is a clinical decision support tool for all healthcare professionals – Doctors, Nurses, Pharmacists, Midwives, Diagnostics, AHPs and more. Visit [UpToDate](#) for current information on over 9,500 clinical topics and view evidence-based topic summaries and recommendations for treatment.

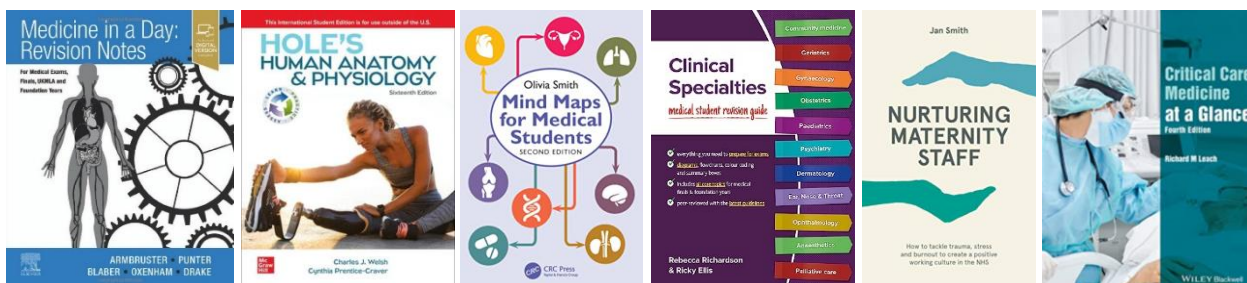
You can access UpToDate via the [Extranet](#) - register for a personal account to access UpToDate anywhere. Alternatively log in via OpenAthens.

UpToDate live webinars in October!

These UpToDate webinars are for all healthcare professionals. Click on the URLs below to register!

DATE/TIME	REGISTRATION URL	AGENDA
4th October 2pm – 2:30pm	tinyurl.com/UTD04OCT2023	UpToDate New Features <ul style="list-style-type: none"> Graphical Answers, Key Graphics, Patient Perspective Topics Patient Education Topics & Emmi Videos
25th October 2pm – 2:30pm	tinyurl.com/UTD25OCT2023	UpToDate Functionality <ul style="list-style-type: none"> Drug Information (powered by Lexicomp), Drug Interactions, Calculators Patient Education – (inc Emmi videos)

New Books



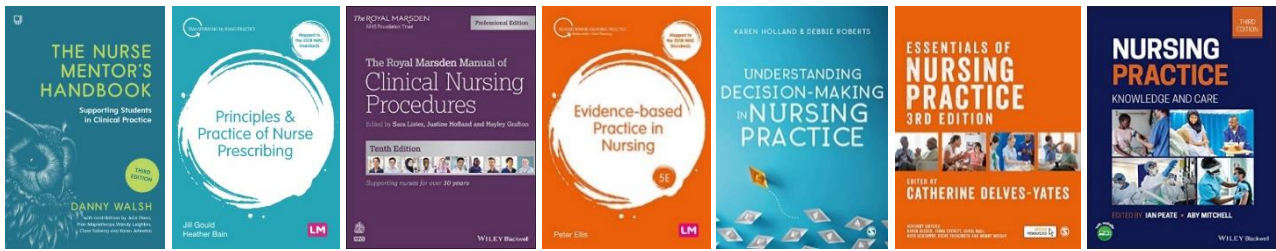
Visit our libraries to see the selection of new books, or click on the images above to reserve via the [library catalogue \(OPAC\)](#)! If you think there are any books we should add to our stock, we'd love to hear from you – please send your suggestions to us at esht.libraryservices@nhs.net

WE-R NHS Catalogue

WE-R NHS is a catalogue of useful multi-professional resources to support your professional development. Access the catalogue here to find out more:

<https://learninghub.nhs.uk/catalogue/we-rnhs>

New Resources for Nursing Staff



We have a great selection of brand new nursing books in our libraries. Click on the images above to reserve via the [library catalogue \(OPAC\)](#).

Access many more healthcare journals for nursing staff, midwives and AHPs at [MAH Complete](#). Simply login with your **NHS OpenAthens** account. If you don't have an account, register [here](#)

Access High Quality Evidence - Join the Library!



Library membership is open to all Trust staff, including students on placement.

By joining the library you can get access to a wide range of physical and online resources, as well as training or assistance with literature searches, and 24/7 access to a comfortable and quiet place to study and relax.

To become a member, come see us in the libraries or complete our [online form](#).

Contact us

Email the Library Team: esht.libraryservices@nhs.net

The Education Centre, Conquest Hospital // Tel: 0300 131 5221 Ext: 770493

The Education Centre, Eastbourne District General Hospital // Tel: 0300 1314500 Ext: 770593

w: <https://www.esht.nhs.uk/service/library-services/library-resources/>

 [@ESussex_NHSLibs](#)