



INTEGRATED EDUCATION

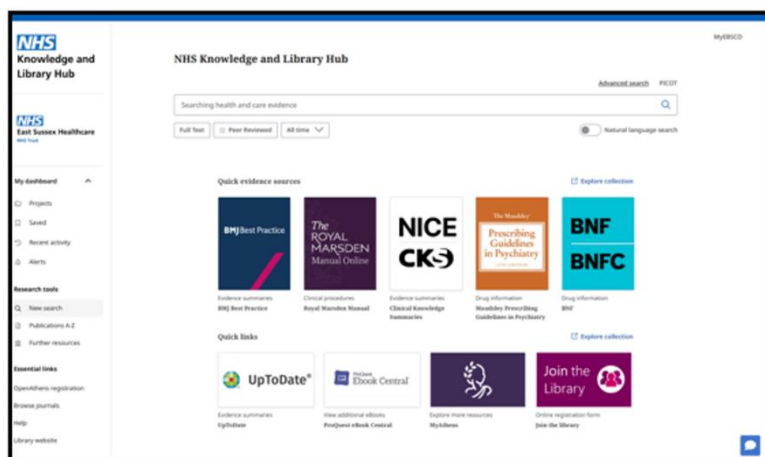
KNOWLEDGE & LIBRARY SERVICES BULLETIN

Issue 17 // July-August 2025

NHS Knowledge & Library Hub

Your NHS Knowledge and Library Hub is getting a fresh new look

The NHS Knowledge and Library Hub provides rapid access to evidence - without the clutter. Visit <https://library.nhs.uk/eastsussex> to search for articles, books, and clinical information (log in via NHS OpenAthens).



The NHS Knowledge and Library Hub will get a cleaner, modern interface – coming soon in July!

The website has been streamlined for efficiency; it is your portal to journal articles and eBooks. The Hub is your link to knowledge.

User guides are available - email the Library Team for a copy.

Contact library staff for help or if you'd like to arrange a training session:
esht.libraryservices@nhs.net

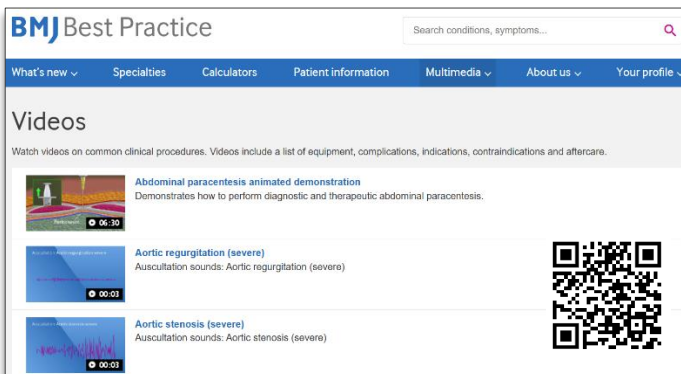
Summer Reads

Going on holiday, or just feel like reading something in the garden? Why not take a book from the **'Reading for Leisure'** fiction selection in our libraries!

Take a book, bring it back or bring another to swap - you don't have to bring books to swap, but we always welcome additions to the collection!



Refresh your knowledge by watching clinical procedure videos in [BMJ Best Practice](#)



To watch videos in BMJ Best Practice

Visit bestpractice.bmj.com/procedural-videos (log in via OpenAthens if you are not using a trust PC) > choose your video and click to watch it.

If you need an OpenAthens account click [here](#) or contact esht.libraryservices@nhs.net if you have forgotten your username or password.

Don't forget, BMJ Best Practice has an accompanying mobile app. Find out more [here](#)

Get it on Google Play

Download on the App Store

Grand Rounds



We welcome Emma Hodkinson from UpToDate who will be presenting two Grand Rounds in July. If you would like to find out more about UpToDate, please come along!

[UpToDate](#) is a clinical decision support tool. It provides evidence-based clinical information at the point-of-care.

Join the UpToDate Grand Rounds:

- **Monday 7 July** at Lecture Theatre, Education Centre, EDGH – 13:00-14:00
- **Tuesday 8 July** at Lecture Theatre, Education Centre, Conquest – 13:00-14:00



UpToDate® Webinar for Nurses

A reminder that a 30-minute webinar session is now available to view, specifically tailored for nurses to help promote the utilisation of the Clinical Decision Support Tool, [UpToDate](#). ESHT nurses have access to [UpToDate](#) via the [Extranet](#) or by signing in with your [OpenAthens](#) account.

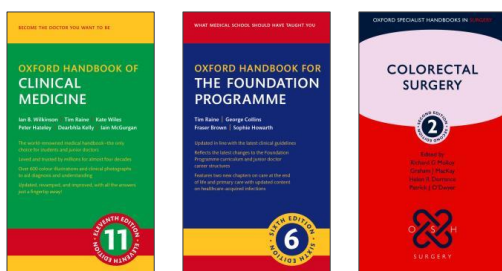
To watch the webinar, click the following link: [UpToDate Clinical Decision Support for Nursing](#)

Changes to the National Core Content

From June 30th NHS England will no longer provide access to the ProQuest platform as part of the [National Core Content](#) of electronic resources for NHS staff.

NHS staff have previously been able to utilise the Proquest platform to conduct searches in PsycINFO and Medline (Medline will still be available via [Ovid](#) or [EBSCO](#)).

Likewise, Oxford University Press e-books (for Handbooks and Textbooks collection, and Specialist Handbooks) will also no longer be available via the National Core Content.



ESHT library users will of course be able to access physical copies via the library service, and also a selection of locally purchased e-books (see left).

Staff can also request to read various e-book titles at [ProQuest eBook Central](#) (sign in via NHS OpenAthens).

All other National Core Content will remain available to eligible NHS staff. Please contact us at esht.libraryservices@nhs.net for further help.

Research section

Share your thoughts on Medical Devices for Dementia

The Clinical Research Team would like to invite you to participate in the **Minder** study. The aim of the study is to gain the perceptions and thoughts of the use of medical devices for people living with dementia. It is studying people's views who have **not** got a dementia diagnosis (*you do not have to know or live with anyone with dementia either*), **or** those who know or live with people with dementia

The [MINDER](#) study is open to EVERYONE and is a short, one off questionnaire. Please share with colleagues, friends and family too.

[MINDER](#) is an award-winning study that looks to improve the lives and wellbeing of people with dementia. Please click to get started [HERE](#).

Join the Library!



Library membership is open to all Trust staff, including students on placement.

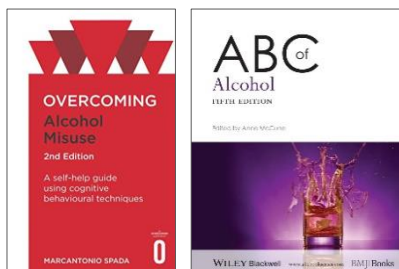
By joining the library you can get access to a wide range of physical and online resources, as well as training or assistance with literature searches, and 24/7 access to a comfortable and quiet place to study and relax.

To become a member, come see us in the libraries or complete our [online form](#).

Events

Alcohol Awareness Week 9-13 July 2025

Alcohol Awareness Week raises awareness about the effect alcohol can have on our lives and campaigns to reduce the serious harm it can have on our mental and physical health, as well as its societal and economic impact. This year focuses on the links between alcohol and work, and the role it plays both in and out of the workplace.

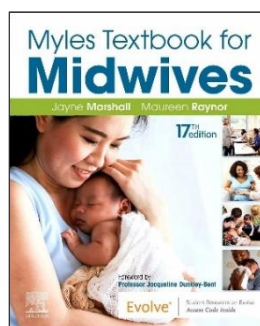
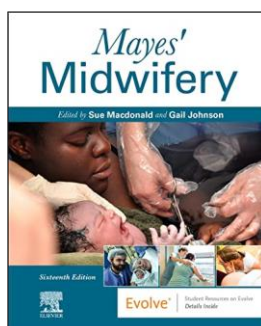
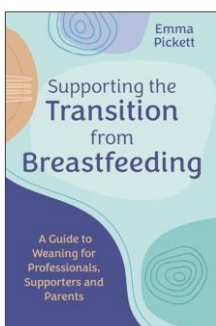
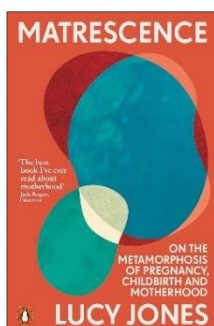


[Search our online catalogue](#) for resources or drop into our libraries.

Visit Browzine to read relevant journals such as [Alcohol](#) and [Drug and Alcohol Dependence Reports](#) (log in via OpenAthens).

World breastfeeding Awareness Week 1-7 August 2025

We celebrate **World Breastfeeding Awareness Week** this August, which raises awareness of issues surrounding breastfeeding, aiming to encourage breastfeeding and to ensure families around the globe are able to feed and care for their infants. Click on the books below to reserve via the [online library catalogue](#) or pop into our libraries to browse the shelves.



Contact us

Email the Library Team: esht.libraryservices@nhs.net

The Education Centre, Conquest Hospital // Tel: 0300 131 5221 Ext: 770493

The Education Centre, Eastbourne District General Hospital // Tel: 0300 131 4500 Ext: 770593

w: <https://www.esht.nhs.uk/service/library-services/library-resources/>

✕ @ESussex_NHSLibs